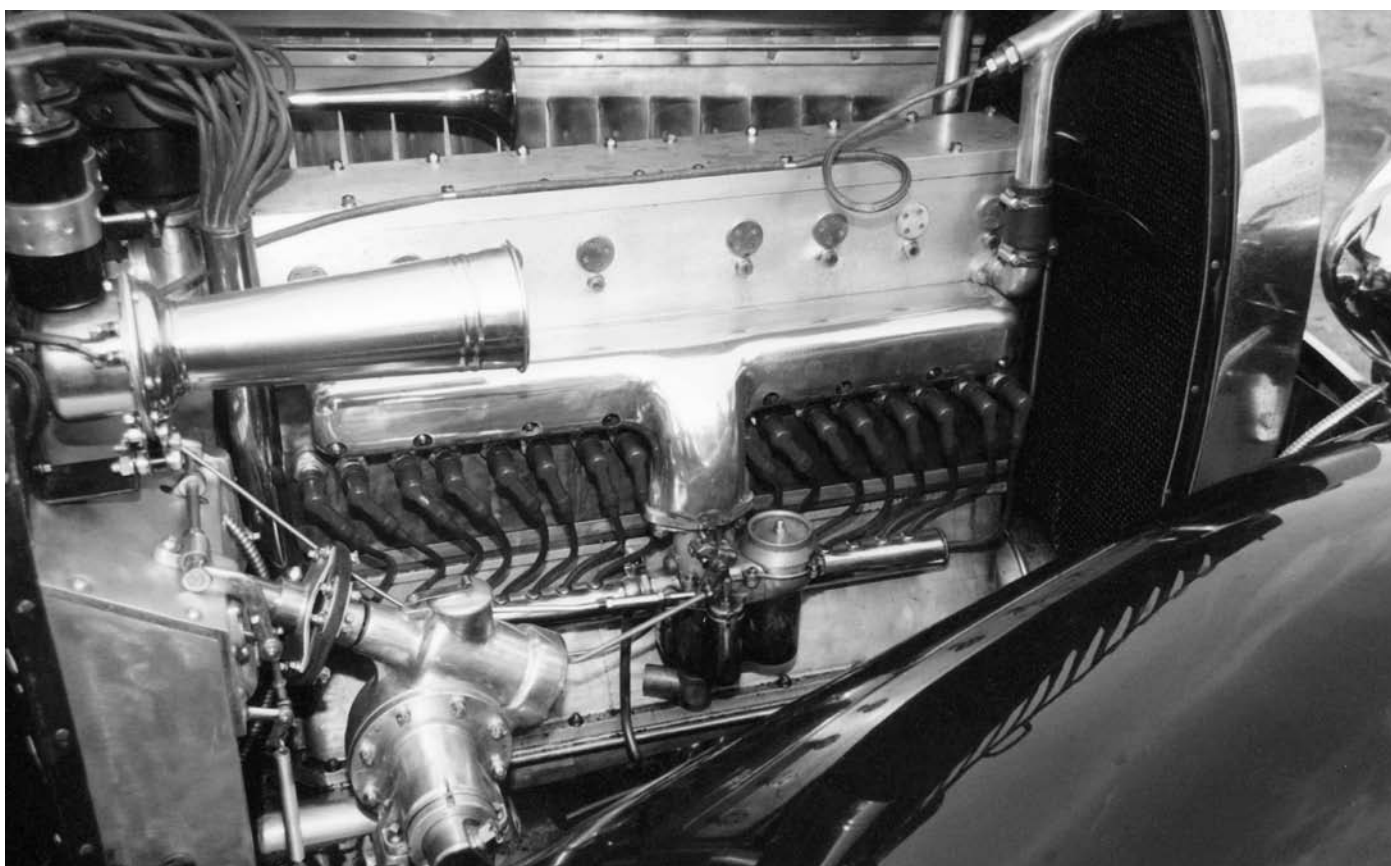
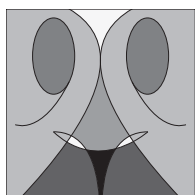


*Type 49 showing the central drive for the camshaft. This car has a non-standard modern inlet scheme.
Moteur de Type 49 montrant l'arbre vertical de commande de l'arbre à cames. Ce moteur a une pipe d'admission
d'un modèle spécial.*



CHAPTER EIGHT

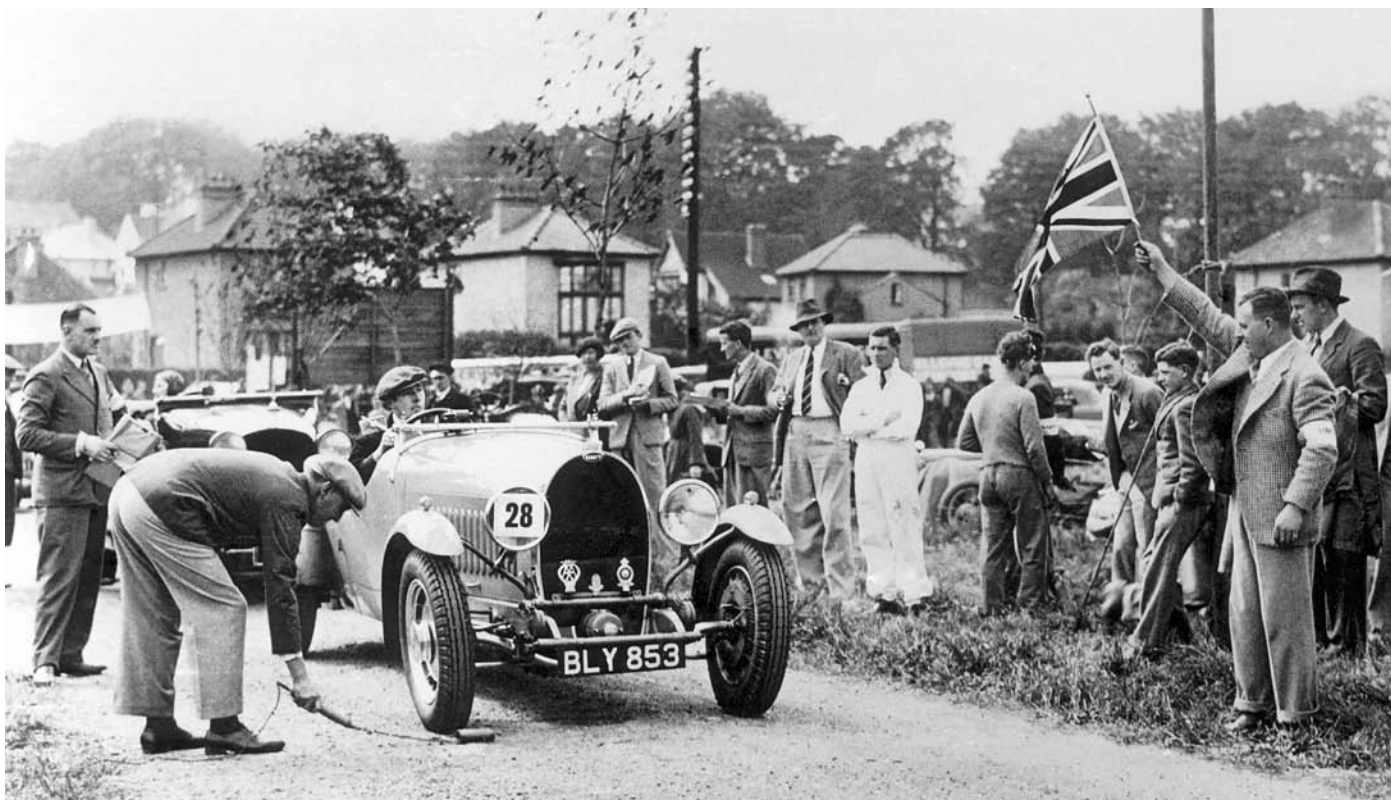
CONCOURS D'ÉLÉGANCE



Between the First and Second World Wars, the Concours d'Élégance were part of high society life. Seaside resorts, spa towns, and many municipalities organized these events, which inhabitants and tourists

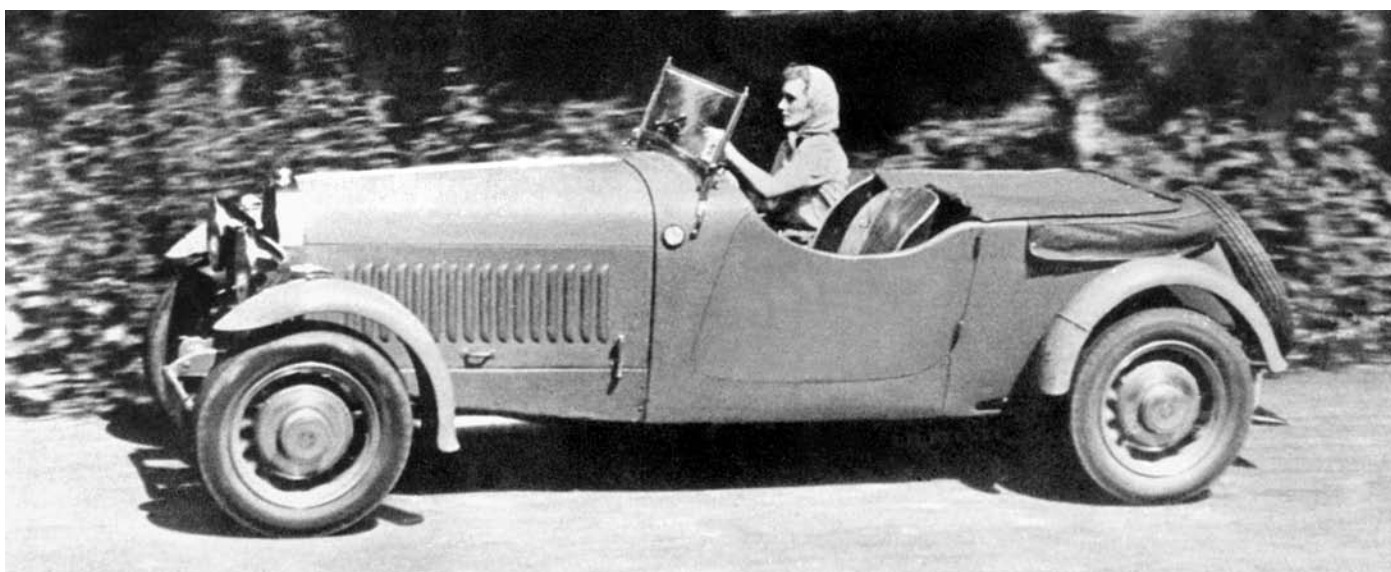
A magnificent Type 44 Sedan De Ville by a Parisian builder, we think Kellner or Binder, depicted at Longchamp. Magnifique coupé 44 avec chauffeur d'un carrossier parisien, Kellner ou Binder, photographié à Longchamp, lors d'un Concours d'élégance.





A Type 49 4-seater tourer by Corsica of Edgware Road, London, built on chassis number 49118. Originally ordered by Bugatti Club President, Colonel Goff Giles.

Chassis numéro 49118 carrossé par Corsica (Edgware Road à Londres), commandé par le Président du Club Bugatti anglais, le Colonel Goff Giles.



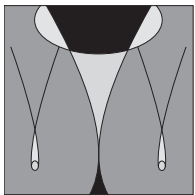
*The above car competing at Prescott in the early post-war years, driven by Mrs Peter Clark.
La même voiture en course de côte à Prescott conduite après la guerre par Mme Peter Clark.*





CHAPTER SEVENTEEN

CABRIOLETS

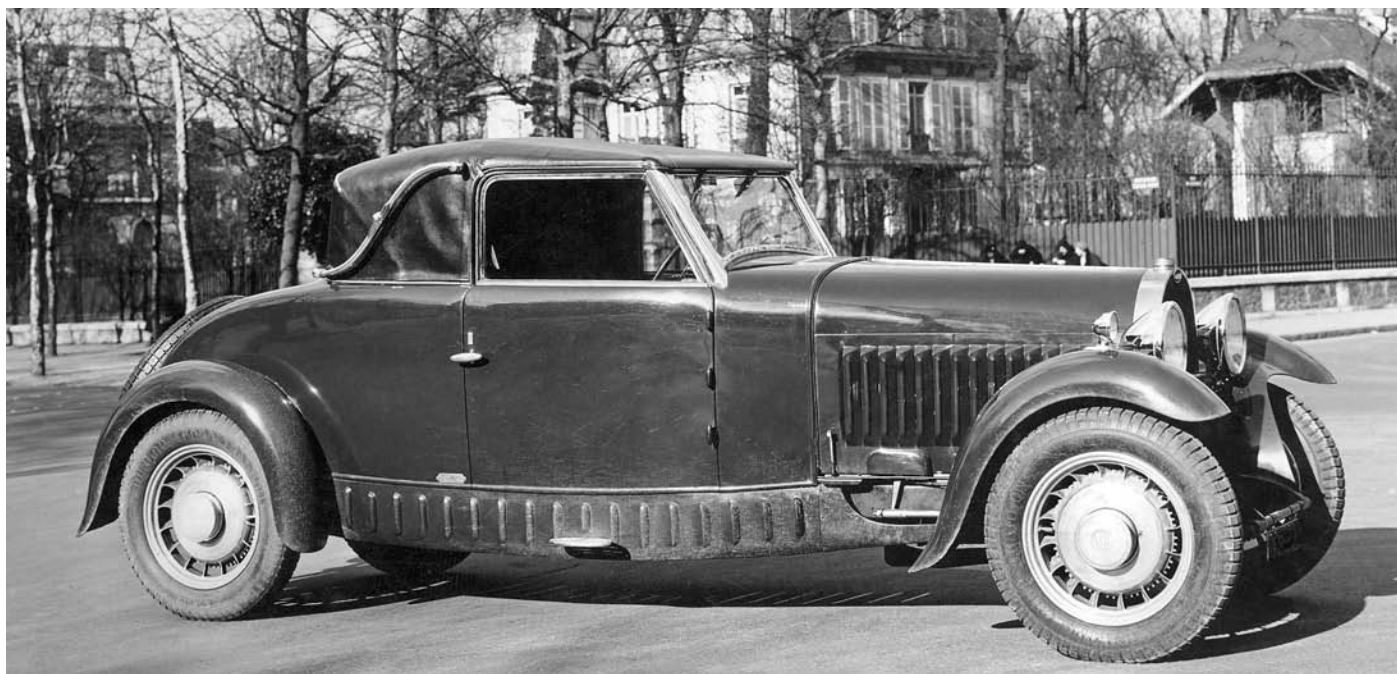


This type was popular in the thirties, particularly on expensive chassis. They were never as satisfactory as a saloon due to the lack of rigidity, heavy doors, and a tendency to rattle and squeak when aged.

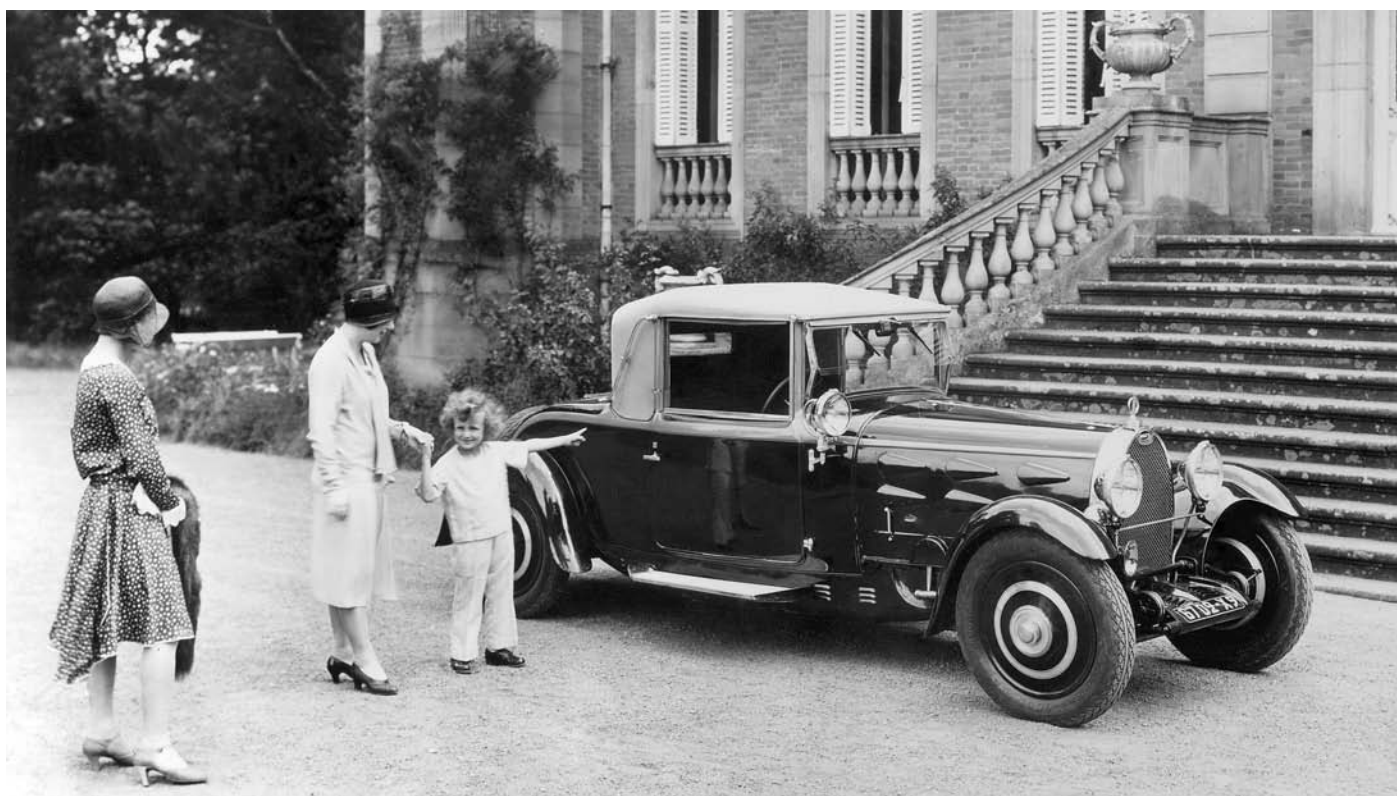
A very early Type 49, chassis number 49534. The coachwork, by Labourdette, has been heavily modernised at a later date.

Type 49 numéro 49534, de début de série; carrosserie Labourdette, très modernisée ultérieurement.





*A unique and attractive drophead style coupé with leather top, the work of Gangloff and believed photographed in Colmar. Note the untidy cutout around the steering drop arm. Photographed when new in the winter of 1932-33.
Cabriolet avec toit en cuir, réalisé par Gangloff et sans doute photographié à Colmar, l'hiver de 1932-33.*



*Well known 1928 factory publicity shots of L'Ebé, Lydia and Roland with the catalogue Gangloff coupé styled by Bugatti. Note the peculiar air vents in the bonnet.
Publicité bien connue avec l'Ebé, Lydia et Roland d'un coupé sur un dessin de Bugatti réalisé par Gangloff. Remarquer les sorties d'air spéciales sur le capot.*

